

Smartphones you can use as your lockbox key

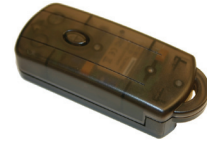
Add Supra eKEY® software to any smartphone listed below and turn it into your lockbox key. Supra only supports eKEY Software on the devices listed on this page. eKEY Fobs are not required with Supra's Bluetooth® keybox, the iBox® BT.



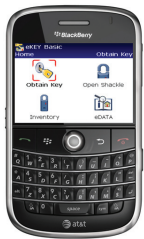
Android™ All Android devices with OS 2.1 or later support eKEY. User experience may vary between devices.

Example devices:

- | | |
|-----------|------------|
| Ally | Eris |
| Captivate | Evo |
| Droid | Hero |
| Droid 2 | Incredible |
| Droid X | Nexus One |



Androids require the use of the eKEY Fob to access the iBox — eKEY Fob not required to access the iBox BT



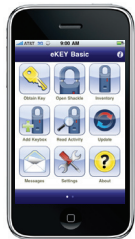
BlackBerry®

8800 series (8820, 8830, 8830 World Edition)
All models in the following product lines:

- | | |
|------------------|-------|
| Bold | Storm |
| Curve | Torch |
| Pearl/Pearl Flip | Tour |



BlackBerrys require the use of the eKEY Fob to access the iBox — eKEY Fob not required to access the iBox BT



iPhone

- | | |
|-------------------|------------|
| iPhone (original) | iPhone 3GS |
| iPhone 3G | iPhone 4 |



iPhones require the use of an eKEY Adapter to access the iBox and iBox BT



Windows Mobile®

Infrared Models

- 8125
- 8525
- HTC Mogul
- HTC P4300
- iPAQ 6900 Series
- MDA
- PPC-6700/6800
- Treo 700w/wx
- Treo 750
- Treo 800w
- Treo Pro (850)
- XV 6700/6800

Non-Infrared Models*

- | | |
|---------------------|---------------------|
| AT&T Blackjack II | iPAQ 900 |
| AT&T Fuze | LG Insite |
| AT&T Fuze NC | MOTO Q™ 9c |
| HTC Fuze | Pantec Duo |
| HTC Imagio | Samsung Ace |
| HTC Ozone | Samsung Epix |
| HTC Pure | Samsung Intrepid |
| HTC Shadow | Samsung Omnia 1 & 2 |
| HTC Tilt 1 & 2 | Samsung Saga |
| HTC Touch Diamond | PN-820 |
| HTC Touch Pro 1 & 2 | XV 6900 |

The Non-Infrared Windows Mobile devices may be used but have not been fully tested.



**Non-infrared Windows Mobile devices require the use of the eKEY Fob to access the iBox and iBox BT*

Palm®

- | | | | | | |
|--------|----------|----------|----------|-----------|-----------|
| Centro | Treo 600 | Treo 650 | Treo 680 | Treo 700p | Treo 755p |
|--------|----------|----------|----------|-----------|-----------|



www.supraekey.com

© 2010 UTC Fire & Security. All rights reserved. Android is a trademark of Google Inc. BlackBerry is a registered trademark of Research in Motion (RIM). Bluetooth is a registered trademark of Bluetooth SIG. iPhone is a registered trademark of Apple, Inc. Palm is a registered trademark of Palm, Inc. Windows is a registered trademark of Microsoft Corporation in the United States and other countries. All other brand and product names are or may be trademarks of, and are used to identify products or services of, their respective owners.